



PEGELPEYEN KUIFIKE ZUGU

SITIO 
 **EL**
 **OLIVAR** 

Colección Museo Arqueológico de La Serena





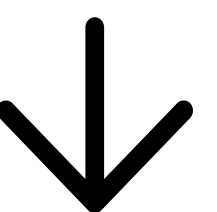
Feychi kuifike kimün mew txawulugkey chi
mogen ka mapuluwun, feymu txekakeiñ chi
pu lof mogelelu wallmapumew, rupalelu
chi antü, pu txokiñ lof che ple, pewfaluwal
feula kiñe rupa txekan zew rupalu,

Feytachi txekanmew, txawupaiñ
kakeumechi Azentun ñi chi pu txoy kiñe
kuifike zugu mogelelu, pewfaluglu pichike
txafon ka pichike wechoz pepi pefiñ chi
pu chemkün kelü txufken, chi Azentun
mapumew ka chi pu txoy; ka pewfaluwi
llaufe chi ñi Itxofillmogen ka chi pu
kurantun chi pu winkul, ka inaltu laken.

Feytachi pu azentun mogekonleygün
Fachiantü chi pu lofche Diaguita mülelu fey
chi lelfün Ragiñ puel mapu pichi chilemew.

Feytachi Azentun mew pewfaluwi kiñe
kimün elkunulu ñi pu kuifike rupalelu chi pu
wechemew

Tukulpan pu reimawen chew ñi fillantü
txawulugkeygün ikeygün ilo, kezu kapürra
ka karü ko





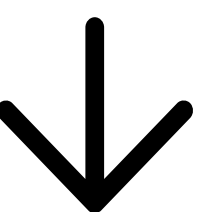
Feytachi pu Azentun entuy zugun ñi chetxokigeal, ka nor kimgaal.

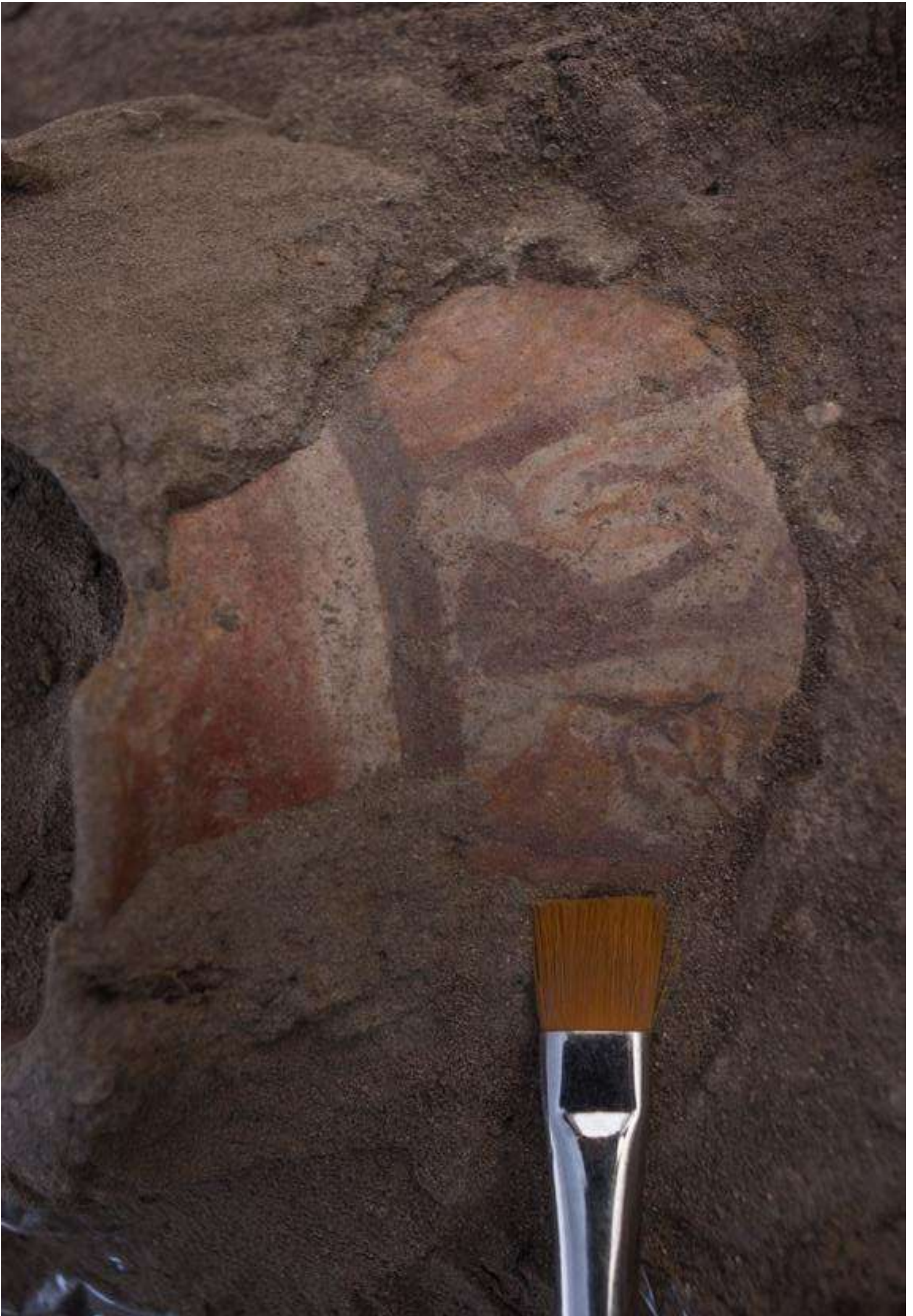
Feytamew, rakizuamaiñ mülepulu reke, chi leufü Choapa mew, Elqui ka Limarí: chi lelfün

Ragiñ puel mapu pichi chilemew.

Wellin chi olivar kiñe küzaughey nielo kuifike zugu, kuifike kimün Serena mapu ple Subsecretaría ñi gengelu ka CCLM, entulu kuifike zugu ka kakeumechi rügatun ñi gütxamkawual kiñe rakizuamew feula rupalelu kom chi pu rekülugkelu lofche mew chi pu Diaguaita, petu amulnelu ñi güren küzaw fillantü feychi txokiñche. Feytachi pegelwe mew, kiñe rupanazugu, feula ka rupalechi antü nülküwalu

Txapümle chi antümew ñi Kiñewal chi güren ñi kuifike rakizuam ñi tukupageal.

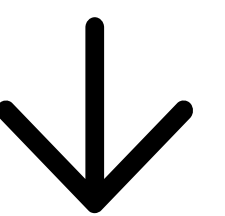




*Nütun kuifikekimün Wellin chi Olivar, Txoy Fün kayu ka Fün pura
Nicolás Aguayo*

Epu Waranka mari Kechu - Epu waranka mari regle

© Kuifikezugu Ilitun chi Olivar.





TXOYCHE DIAGUITA

**LOFCHE KA TXAWUNCHE KOM KIÑEULELU
EGÜN**

Txawunche kuifi Diguitas Elkinos LLastay

Txoyche chi Serena, Txokiñ chi Elki,
Wallpan ti Kokimpu

Lofche kizugünewun Diaguita newen kuifi Tekirke

Wellin chi pu kompañ, Txokiñ chi Elki,
Wallpan ti Kokimpu

Lofche kizugünewun Diaguita Warmayanay Anagrice

Waria chi Ovalle, lelfün chi limari,
Wallpan ti Kokimpu

Lofche Diaguita Amack Tambillos

Tambillos, Txokiñ chi Elki, Wallpan ti Kokimpu

Lofche Diaguita Apus chi Elki

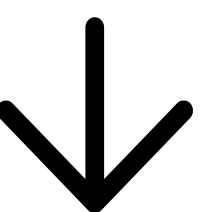
Txoyche chi Vicuña, Txokiñ chi Elki,
Wallpan ti Kokimpu

Lofche Diaguita kizugünewun Clara Patri Kakana

Lelfün chi Limari, Wallpan ti Kokimpu

Lofche Diaguita kizugünewun kutún Amar Unock

Chi pu kelü, lelfün chi Elki, Txokiñ chi Elki,
Wallpan ti Kokimpu





Lofche Diaguaita kizugünewun Zapan Zucun

Waria chi Ovalle, Lelfün chi Limari,
Wallpan ti Kokimpu

Lofche Diaguaita Titakin de las cardas

Chi pu Carda, Txokiñ chi Elki, Wallpan ti Kokimpu

Lofche Diaguaita Yacurmana chi nag mapu Potrerillo

Txoyche chi Serena, txokiñ chi Elki,
Wallpan ti Kokimpu

Lofche Domingo Taucán

Troyche chi Serena, Txokiñ chi Elki,
Wallpan ti Kokimpu

Lofche Hasali, Lofche Amakay kakan Diaguaita

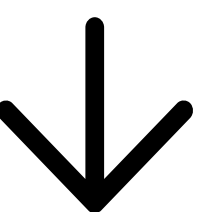
Txoyche Chi kokimpu, Txokiñ chi Elki,
Wallpan ti Kokimpu

Lofche kuifi Diaguaita Maray

Waria chi Ovalle, Lelfün chi Limari,
Wallpan ti Kokimpu

Lofche Troncal Elke Kañiguanti, Lofche Elke

Txoyche Chi kokimpu, Txokiñ chi Elki,
Wallpan ti Kokimpu



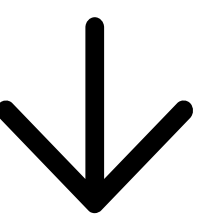


Magelayu tami tukulpayal feytachi
pegelwe rakizuamal kom chi pu negümew
taiñ zeumaken taiñ rügalentuam, peal ka
txapümal zugu taiñ pu kimün mew;

chi tukulpan feychi pu txokiñ zugu küpa
kimgeal ñi kintugeken, eltukawenmew,
chemkün ñamlelu taiñ kuifike zugu wirilelu
reke kiñe fillantü wiripeyem.

chumgechi chi feychi kintun pewfaluwal
kiñe kümeke zugun mülelu ñi kuifike kimün
mew kizu ñi zuam ka kom chi pu che,
zugualu reke ñi aukiñ mew: mülelu

Wekuntu, ka müley ponwito!

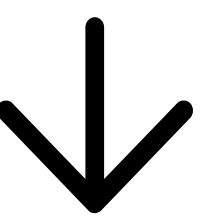


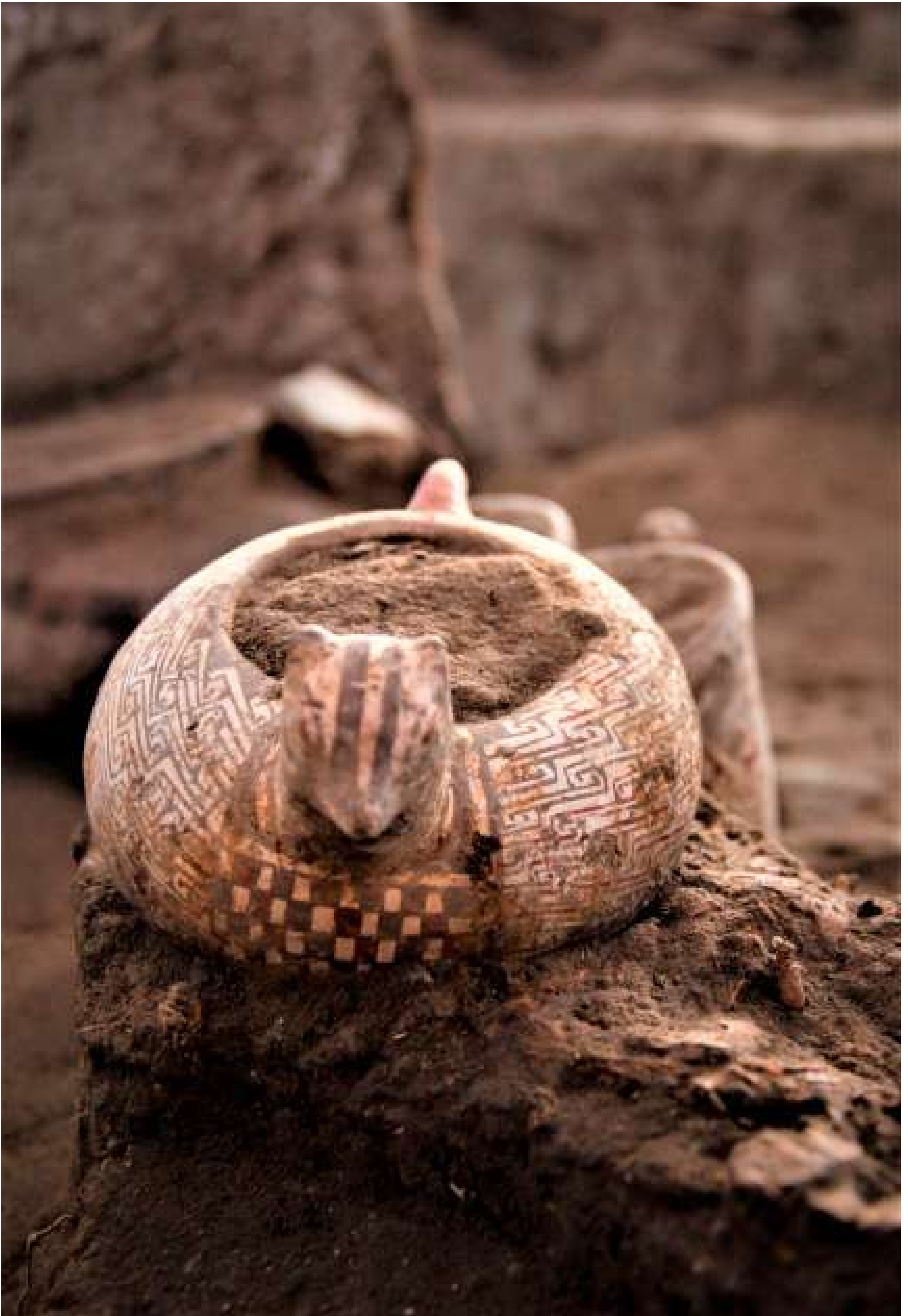


CHI OLIVAR

Chi Olivar ponvitumew niey kuifike itxofillchemkün lalelu ka elûn amulnelu epe regle kamel amul mülelu. Anükonley epu waranka txekan, puelple aymün lafken ple epu meli waranka txekan. puel ple Serena waria mew. Niey kiñe fütxa yompetun, ñi amulmapun kimfalnolu ñi pukelu kiñe ke küla mari hectáreas mapu, kiñe fütxa wallpan ka ponwituley feymu azkonley chi feula chillkatun falintugeal ka kimgéal chi kakeumechi rakizuam El Molle, Animas ka Diaguíta rupantü mew. ka oymantun zugu. Inafül pura kamel anükonlelu rume kuifike amulzugun, chi zoy newenlelu ñi gen chi kimün Animas ka Diaguíta. Chi txokiñtumew ka txapümkey conchales azelkan zugu chi kimün mew. Molle (0-800 d.c) ulkey chi fütxa amul kuifike rakizuamew mülelu feytachi txokiñtumew.

Chi Olivar, zew rupay, müley feula ka mülekonlerpuay.

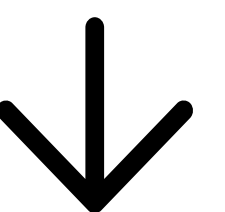




Nütun kuifikekimün wellin chi Olivar, Txoy FÜN kayu ka FÜN pura
Paola González

Epu Waranka mari Kechu - Epu waranka mari regle

©Kuifikezugu Ilitun chi Olivar.





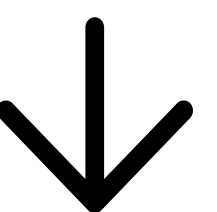
AZKINTULMI PÜRÁPÜRAWE

Azkintunmu fütxa püra mew zoy küme pegekey müchayke azkintunmu kiñeke Azentun, taiñ Kúpalkimün, ka ñi pu pepi azkintun pewtun kimünmew, püramkey ñi txokiñtun taiñ pepi peal, Chem lof mapu ñi anünmapu len, chuntepu taiñ mogekonlepan ka taiñ chumgechi petu mülen wamtun zeumayal weke azentun, rüf inche, kizu ñi az, feytachi azentun chi mapu chi Olivar zugukeyemu kiñe lofple epe amulelu, mülepulu chi puel mapu ple mülenunmu itxo fill mogen.

Ilako lafken karüf mew azkintukeiñ kiñe ragiñentu mapu, nielo

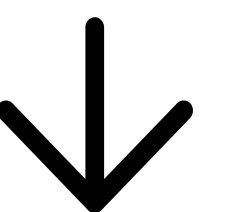
Llepan az re karü katxükonkelu chi pu mawizantunmew.

Chi zugun amulnelu werküy kiñe wezugun welualu feypinmu chi pürápürawemew.





Nütun kuifikekimün Wellin chi Olivar, Txoy Fün kayu ka Fün pura
Nicolás Aguayo
Epu Waranka mari Kechu - Epu waranka mari regle
© Kuifikezugu Ilitun chi Olivar.





RÜGANENTUN

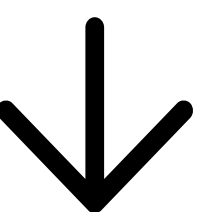
Rakizuamaiñ chi mapu ka ñi kakeumechi txoy kiñe chillka reke nielo fentxen tapül, Amulneiñ

Ñi chillkatun, azkintuaiñ ka tuwayafiñ, feymu peaiñ weke kimün ka kuifike kimün kakezugu mew Tapültufilmi kintufilmi rügan kimün reke: zoy amulfilmi, kamapu zoy amuaiñ, zoy tiyeuple ka Zoy ponwintu puaiñ, amulerpuaiñ taiñ nial kimün kimkantunmu, chi nielo feytachi chillka

Rüganentun mew müley ñi newentual: fülkompuyami chi witxina mew nochi, azkintuaymi ka fütxa amulfilmi tami azkintun, inafül ka fütxa mapu, lloyünage tami pepi peal chi azentun ragiñ

welliñ mew. Leliaymi tami kalülmew kiñe chemkünreke mantalelu ñi zuamtual chi ñi Kimnonzugu, kiñe chemkün nüfalnolu, kiñe küzaukawe mogen.

**Rügalentunmew müley ñi newentual
chi müllo**

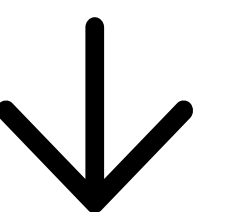




Nütun kuifikekimün Wellin chi Olivar, Txoy Fün kayu ka Fün pura
Nicolás Aguayo

Epu Waranka mari Kechu - Epu waranka mari regle

© Kuifikezugu Ilitun chi Olivar.



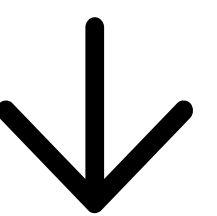


KUIFIKE KIMÜN ÑI TXOY

Feypikefuy chi pu kimche papay
kuifike antü mew, rupay pige y chi unen
aponmawun zeumaneltulu chi lelfün chi
Elqui. Gütxamkey chi pu papay kiñeke
montuygün Püralu zoy chi pürachi
winkul mew, feymu pünakompuygüg pu
kurantunmew feychi pu winkul. Chi kimün
txawulu laken mapu egu.

Chi pu Diaguita, kake lofche reke, chi
kuifike rakizuam ka ñi kimün pewfaluke y ñi
pegeluwal

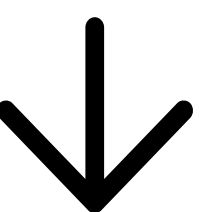
Chi pu kakeumechi ñi mogen chi lof mapu
mew.





Nütun kuifikekimün chi inafül Brillamar epu waranka mari

©Gabriel Cantarutti y Gloria Cabello



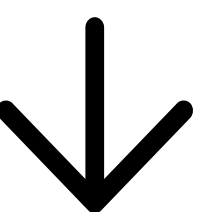


KUIFIKE KIMÜN LOFCHE MEW

Rumel chi pu amul zugun unelelu chi feypin kimünmew feypikeygün ka tukukeygün kiñeke llitun unen kimün llerpukelu chi pu zugun kom lof che indígena. Norlekefulu ñi txawun egün.

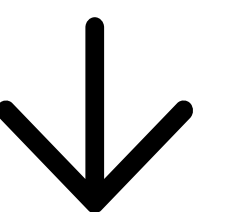
Txawun lofche reke chi epu waranka kayu txipantu mew, chi pu Diaguitas petu pewfalugekelay ñi zugun chi pu lofche ka txawun koneltulo feytachi pegelwe mew feypintukuley feytamew müte kimgelay ka chetxokigelaygün chi pu lofche Diaguita mogelelu, feymu goymanentugeygün koneltulu kakeumechi che kimnelu chi zugun pu indígena mogelelu feytachi chile mapu mew

Pu eltün indígenas petu oymantunegey kiñe re chemkün reke zew rupalu, welu amuleay chi reküluwun ñi ñüküfleal chi pu lof che indígena.





Nütun kuifikekimün Wellin chi Olivar, Txoy Fün kayu ka Fün pura
Nicolás Aguayo
Epu Waranka mari Kechu - Epu waranka mari regle
© Kuifikezugu Ilitun chi Olivar.



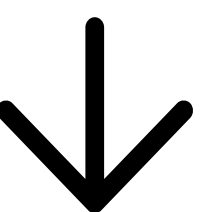


KUIFI KA KÜPALECHIZUGU

Epu waranka mari kechu txipantu mew zeumagey chi yompentun rüpü txapümal kom chile tuwi puel mapu ple puwualu willi mapu mew welu katxüntukufigün chi waria Serena mew ñi Pu zeumafe küzaw peygün kalül che, rügalkonlelu ella konün mapu mew, wentelelu reke Feytachi wellin kutxantuy fentxen wezake zugu rüganmu nienolu ñi rupayal küme ramtufule txemlu chi waria chi pu mantalelu txawulugwigün ñimitual, aykütual ka chetxokigeal fey tachi fütxa wellin kuifike kimün nielo zuamtufali, pewfaluwalu chi gen kuifike chemkün nürüfkonlelu petu mülelu feymu feula, feychi pu mülenagpulu fentxen küyen llenelu powitu kuñiwtunmu Genonmu nor zugun ka rakizuam.

Fachiantü, chi pu lof che Diaguita, ñi txawun che indígena kiñeuleygün feyentunmew feymu

Müley ñi pewfaluwual ka newentual ñi kuifike rakizuam ka ñi kimün, ñi inkayal kom tawulele egün

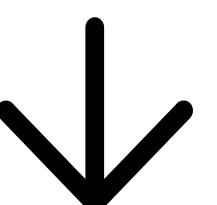




*Nütun kuifikekimün Wellin chi Olivar, Txoy Fün kayu ka Fün pura
Nicolás Aguayo*

Epu Waranka mari Kechu - Epu waranka mari regle

© Kuifikezugu Ilitun chi Olivar.



SITIO 
 **EL**
 **OLIVAR** 

Colección Museo Arqueológico de La Serena

WWW.CCLM.CL

CENTRO

CULTURAL

LA MONEDA

